

**ARLINGTON VIRGINIA**

DEPARTMENT OF ENVIRONMENTAL SERVICES  
 FACILITIES & ENGINEERING DIVISION  
 ENGINEERING BUREAU  
 2100 CLARENDON BOULEVARD, SUITE 813  
 ARLINGTON, VA 22201  
 PHONE: 703.228.3629  
 FAX: 703.228.3606

SEAL  
 COMMONWEALTH OF VIRGINIA  
 MATTHEW JOSEPH TROUT  
 Lic. No. 042618  
 PROFESSIONAL ENGINEER

APPROVALS \_\_\_\_\_ DATE \_\_\_\_\_  
 QUALITY CONTROL ENGINEER \_\_\_\_\_  
 CONSTRUCTION MANAGEMENT SUPERVISOR \_\_\_\_\_  
 WATER, SEWER STREETS BUREAU CHIEF \_\_\_\_\_  
 TRANSPORTATION DIRECTOR \_\_\_\_\_  
 PROJECT MANAGER \_\_\_\_\_

REVISIONS \_\_\_\_\_ DATE \_\_\_\_\_

SEE BELOW - STATION 5+40 N SYCAMORE ST

SEE ABOVE - STATION 5+40 N SYCAMORE ST

SEE SHEET 56 - STATION 8+55 N SYCAMORE ST

PROJECT NAME AND LOCATION  
**N SYCAMORE ST**  
 LANDSCAPE PLAN I  
 BEGIN TO STA 8+55  
 26TH ST N TO WILLIAMSBURG BLVD  
 NS28

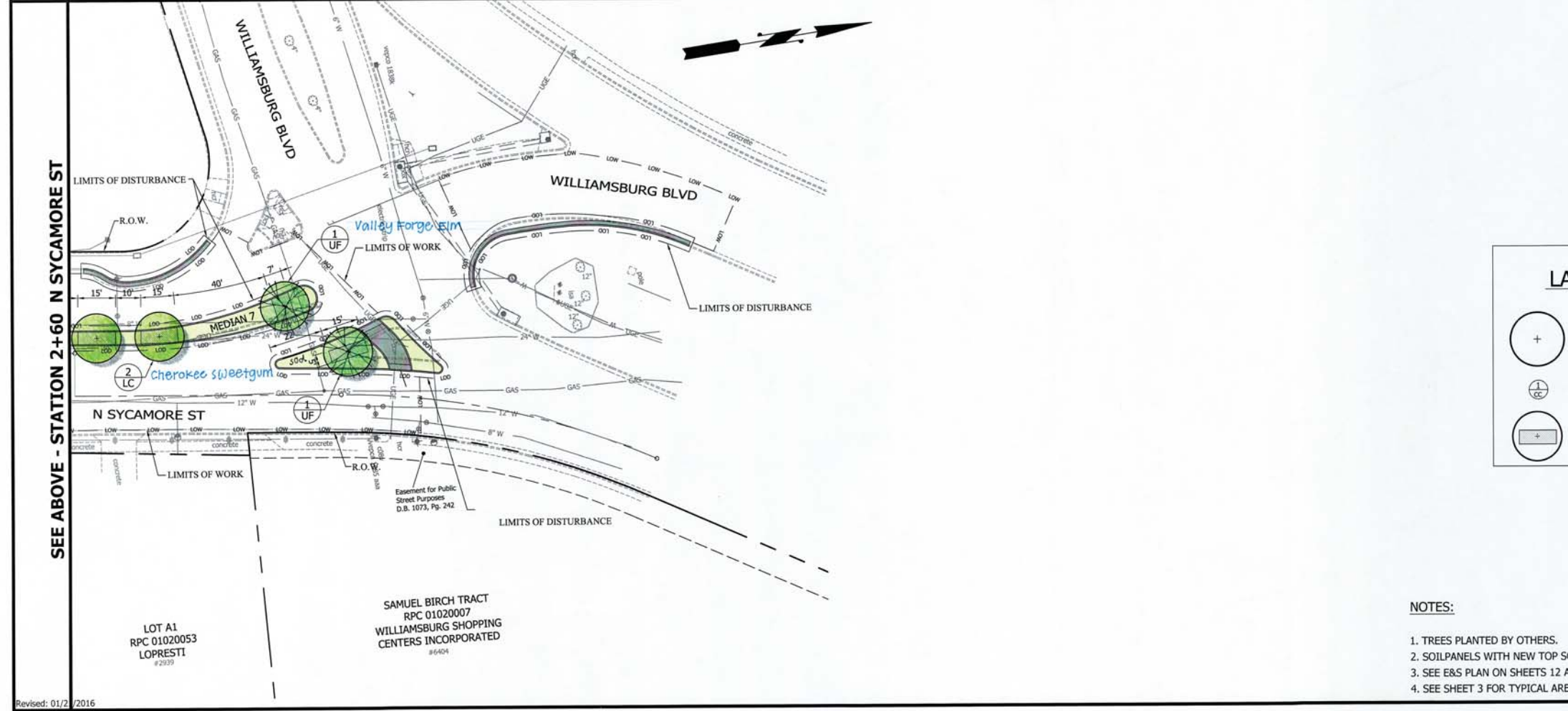
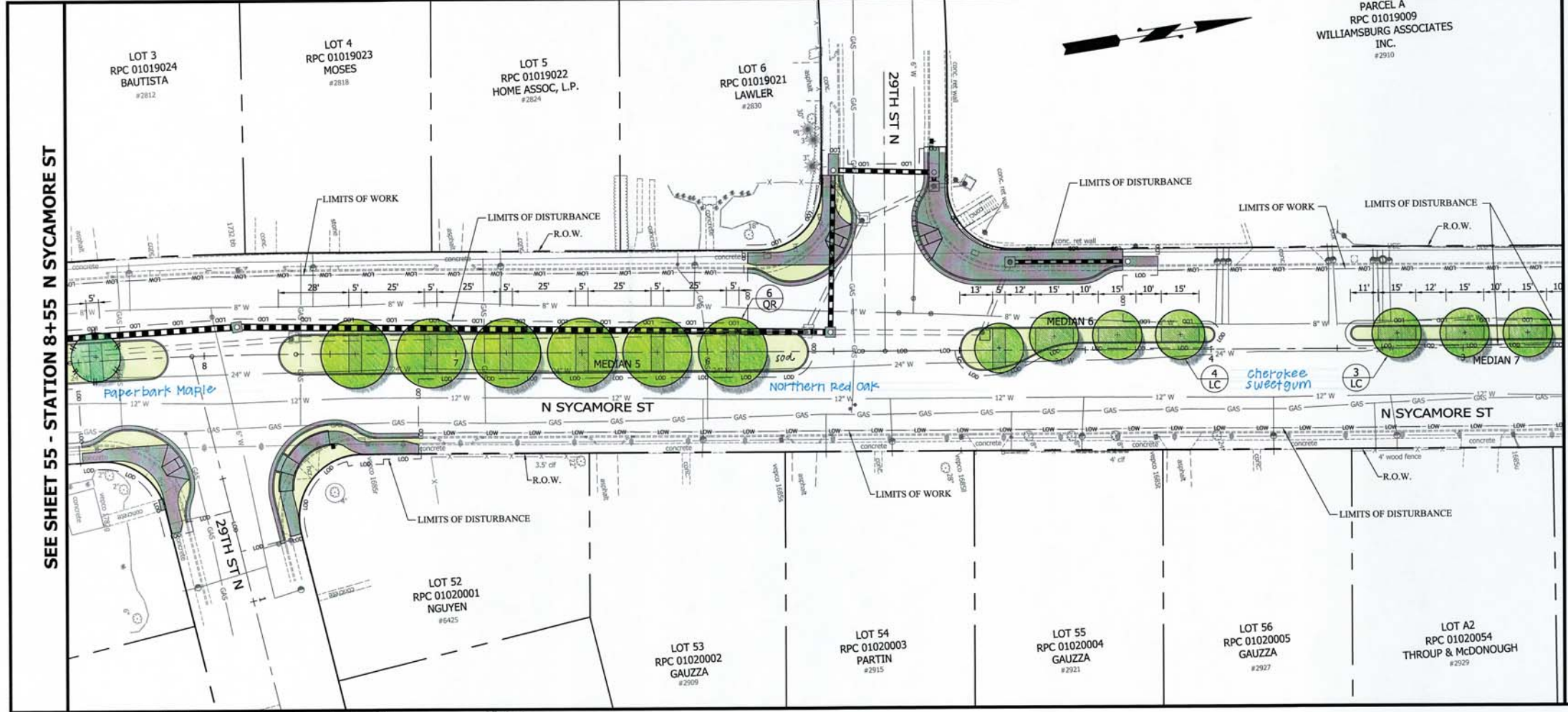
DESIGNED: J LIN  
 DRAWN: J LIN  
 CHECKED: M TROUT  
 MISS UTILITY TRANSMITTAL #: 5235

FILENAME: NS28-ERS PLAN.DWG  
 PATH: C:\DATA\DESIGN\PROJECTS\NS28  
 PLOTTED: FEBRUARY 22 2017  
 PLOTTED BY: JILIN

SCALE  
 GRAPHIC SCALE  
 25 0 25  
 SCALE: 1" = 25'  
 jey 2-23-2017

SHEET 55 of 64





**LANDSCAPING LEGEND**

- PROPOSED TREE LOCATION (PROPOSED TREE LOCATIONS BY OTHERS, NOT IN THIS CONTRACT)
- QUANTITY AND NAME OF PROPOSED TREE (SEE SHEET 57 FOR TREE PLANTING NOTES AND DETAILS).
- IMPORTED NEW TOPSOIL - SOIL PANELS 30" DEEP, TYP. SEE SHEET 57 FOR DETAIL

- NOTES:**
- TREES PLANTED BY OTHERS.
  - SOILPANELS WITH NEW TOP SOIL AT EACH TREE LOCATION 5 FEET WIDE AND 30 INCH DEEP.
  - SEE E&S PLAN ON SHEETS 12 AND 15 FOR THOSE EXISTING TREES TO BE PROTECTED OR REMOVED.
  - SEE SHEET 3 FOR TYPICAL AREAS OF TOPSOIL AND SOD.



DEPARTMENT OF ENVIRONMENTAL SERVICES  
 FACILITIES & ENGINEERING DIVISION  
 ENGINEERING BUREAU  
 2100 CLARENDON BOULEVARD, SUITE 813  
 ARLINGTON, VA 22201  
 PHONE: 703.228.3629  
 FAX: 703.228.3606  
 COPYRIGHT © 2016 ARLINGTON COUNTY VIRGINIA - ALL RIGHTS RESERVED.

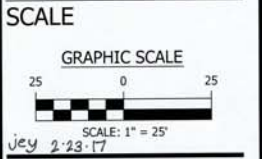


APPROVALS	DATE
QUALITY CONTROL ENGINEER	
CONSTRUCTION MANAGEMENT SUPERVISOR	
WATER, SEWER STREETS BUREAU CHIEF	
TRANSPORTATION DIRECTOR	
PROJECT MANAGER	

REVISIONS	DATE

**PROJECT NAME AND LOCATION**  
 N SYCAMORE ST  
 LANDSCAPE PLAN II  
 STA 8+55 TO END  
 26TH ST N TO WILLIAMSBURG BLVD  
 NS28

DESIGNED: J LIN  
 DRAWN: J LIN  
 CHECKED: M TROUT  
 MISS UTILITY TRANSMITTAL #: 5235  
 FILENAME: NS28-E&S PLAN.DWG  
 PATH: Q:\DATA\NS28\NS28-E&S.DWG  
 PLOTTED: FEBRUARY 22 2017  
 PLOTTED BY: JILIN



SHEET 56 of 64